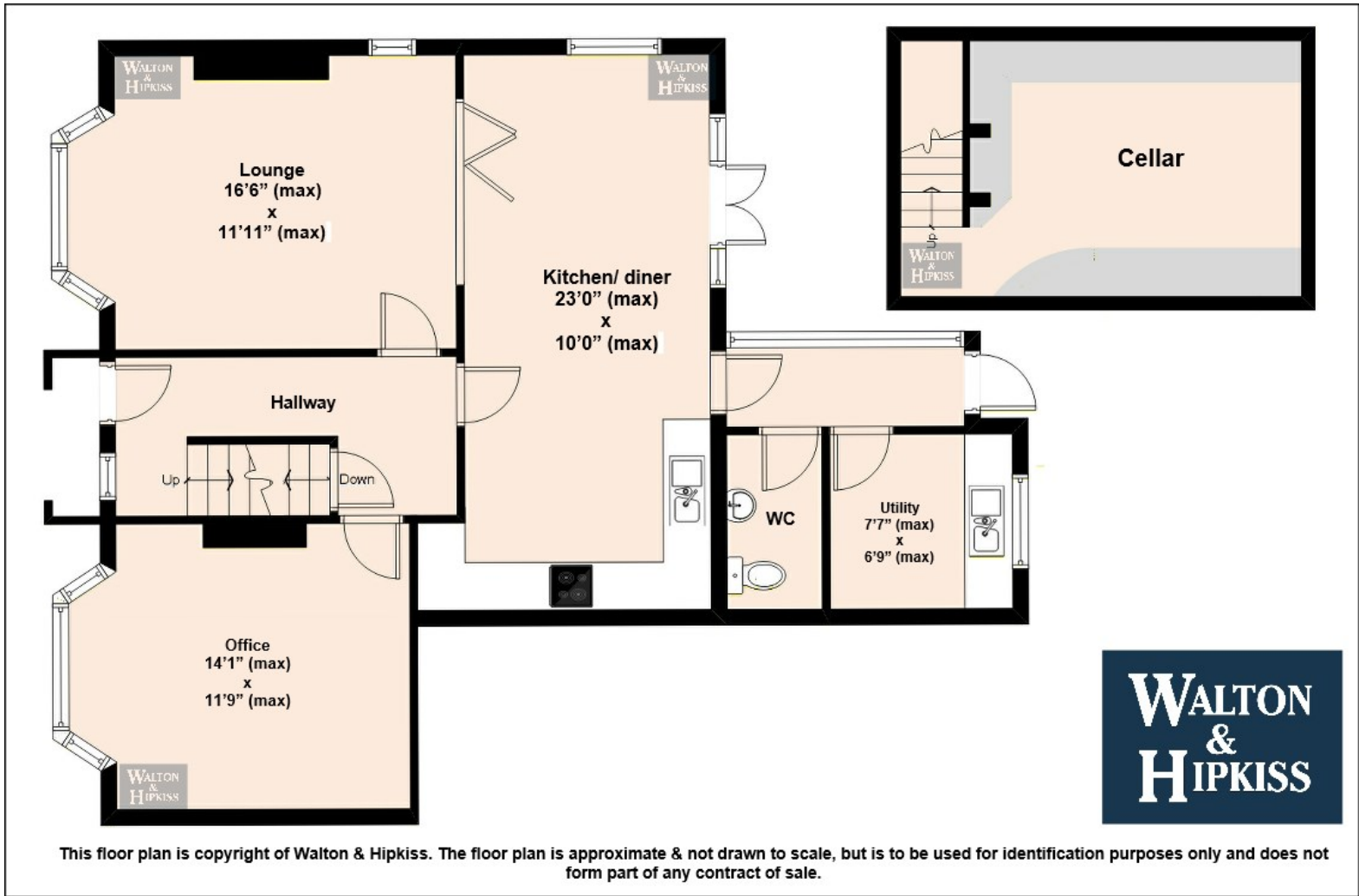




**4 Bed
House - Semi-
Detached
located
in Kidderminster
£450,000**



**WALTON
&
HIPKISS**



DIRECTIONS

CONTACT

55 Oxford Street
Kidderminster
Worcestershire
DY10 1BJ

E: koffice@waltonandhipkiss.co.uk
T: 01562 519777



EPC Rating: D
Council Tax Band: D

